



£289,995 Fixed Price

Plot 244, Ashworth Place, Tithebarn, Exeter EX1 3UQ

Semi-Detached House | 3 Bedrooms | 3 Bathrooms

Landline:- 01392 469333



www.rightathomeexeter.com



Step Inside

Key Features

- PART EXCHANGE
- MOVE IN FOR CHRISTMAS
- HANBURY THREE BED SEMI DETACHED HOUSE
- KITCHEN UPGRADE INCLUDING UPGRADED SINK/TAP, SPOTLIGHTS, SHOWER UPGRADE, CHROME TOWEL RADIATOR TO ENSUITE AND BATHROOM
- MODERN OPEN PLAN KITCHEN/DINING ROOM
- BRIGHT & SPACIOUS LOUNGE
- MASTER BEDROOM EN-SUITE
- DOWNSTAIRS WC CLOAKROOM
- FAMILY BATHROOM
- ENCLOSED REAR GARDEN
- DRIVEWAY FOR TWO CARS
- CLOSE PROXIMITY TO GOOD TRANSPORT LINKS/SCHOOLS/AMENITIES
- FREEHOLD
- COUNCIL TAX TBC

Main Particulars

** PART EXCHANGE ** * MOVE IN FOR CHRISTMAS * HANBURY THREE BED SEMI DETACHED HOUSE * KITCHEN UPGRADE INCLUDING UPGRADED SINK/TAP, SPOTLIGHTS, SHOWER UPGRADE, CHROME TOWEL RADIATOR TO ENSUITE AND BATHROOM * MODERN OPEN PLAN KITCHEN/DINING ROOM * BRIGHT & SPACIOUS LOUNGE * MASTER BEDROOM EN-SUITE * DOWNSTAIRS WC CLOAKROOM * FAMILY BATHROOM * ENCLOSED REAR GARDEN * DRIVEWAY FOR TWO CARS * CLOSE PROXIMITY TO GOOD TRANSPORT LINKS/SCHOOLS/AMENITIES * FREEHOLD * COUNCIL TAX TBC

Ashworth Place is a collection of two, three and four-bedroom homes located less than 5 miles to the east of Exeter. Surrounded by beautiful countryside, this is a truly idyllic setting. With its range of new homes, excellent doorstep amenities and fantastic commuter links, Ashworth Place is sure to have something to suit you perfectly.

East Devon is a gorgeous area, sometimes overshadowed by the lure of South Devon. However, with the stunning Jurassic Coast, the beautiful Exe Estuary, and plenty of beaches of its own, this is a great place to set up your new home. Historic Exeter has so much to offer, and it's easy to get into the countryside too. The National Trust's Killerton estate just beyond Broadclyst, includes the 800 acre Ashclyst Forest, and Woodbury Common, perfect for walking and cycling trails with views of the sea, are both an easy drive from Ashworth Place.

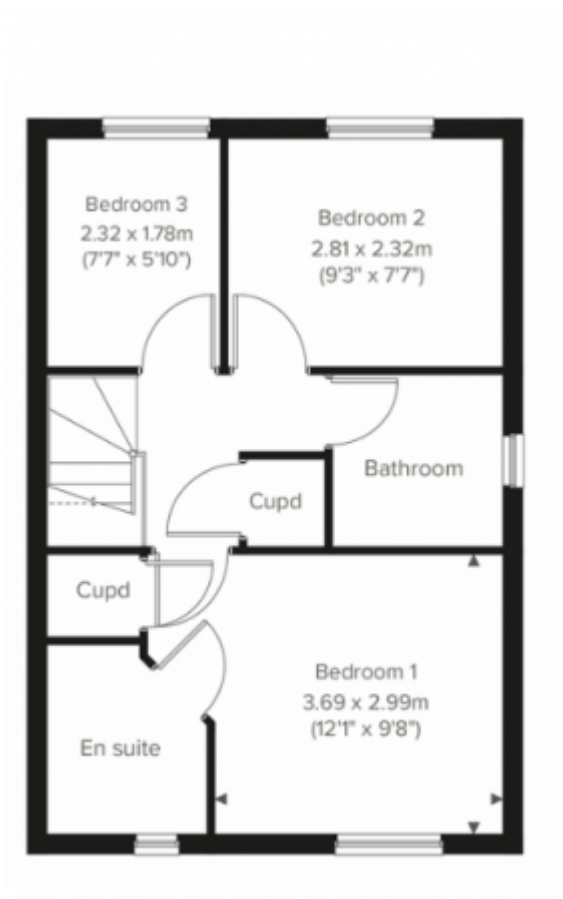
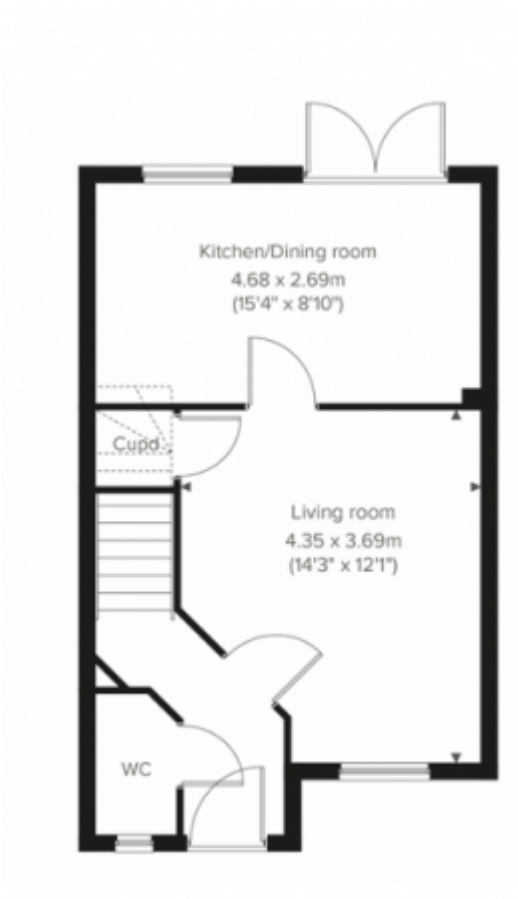
Local amenities on your doorstep

This stunning semi-rural location benefits from a brand new town centre, complete with local shops, schools, businesses and a multi-purpose community building. Just 8.5 miles away is the delightful village of Ottery St Mary with its literary history, quirky shops and annual Tar Barrel ceremony. Within a 20 minute drive is the thriving city of Exeter, a hub of entertainment, leisure and shopping in the South West.

The extremely popular Hanbury is a three-bedroom family home with a bright and modern open-plan kitchen/dining room with French doors leading into the garden. The downstairs WC, three handy storage cupboards and an en suite to bedroom one mean it ticks all the boxes for practical family living.

Please contact us at Right at Home Estate Agents for more information and to request a viewing.





This floorplan is for illustrative purposes only and the location of doors, windows and other items are approximate.

Telephone: Landline:- 01392 469333



www.rightathomeexeter.com