



£279,995 Fixed Price

Plot 254, Ashworth Place, Tithebarn Lane, Exeter EX1 3UQ

Terraced House | 3 Bedrooms | 3 Bathrooms

Landline:- 01392 469333



www.rightathomeexeter.com



Step Inside

Key Features

- ** WEEKLY OFFER - £5,000 DEPOSIT BOOST **
- UPGRADES:- SPOTLIGHTS, SHOWER UPGRADE, CHROME TOWEL RADIATOR IN BATHROOM AND EN-SUITE, CHOOSE YOUR OWN KITCHEN AND TILES.
- SOUTER - THREE STOREY THREE BEDROOM HOUSE
- MASTER EN-SUITE
- LIVING ROOM
- KITCHEN/DINING ROOM
- FAMILY BATHROOM
- CLOAK ROOM
- CAR PARKING FOR TWO CARS
- FREEHOLD
- COUNCIL TAX TBC

Main Particulars

**** WEEKLY OFFER - £5,000 DEPOSIT BOOST ** * UPGRADES - SPOTLIGHTS, SHOWER UPGRADE, CHROME TOWEL RADIATOR IN BATHROOM AND EN-SUITE, CHOOSE YOUR OWN KITCHEN TILES** * SOUTER - THREE STOREY THREE BEDROOM HOME * CAR PARKING FOR TWO CARS * FREEHOLD * COUNCIL TAX TBC**

An attractive three-storey, three-bedroom home, the Souter has an open-plan kitchen/diner, living room and three bedrooms. Bedroom one on the top floor benefits from an en suite. The enclosed porch, downstairs WC, two storage cupboards and off-road parking mean that this home is practical as well as stylish.

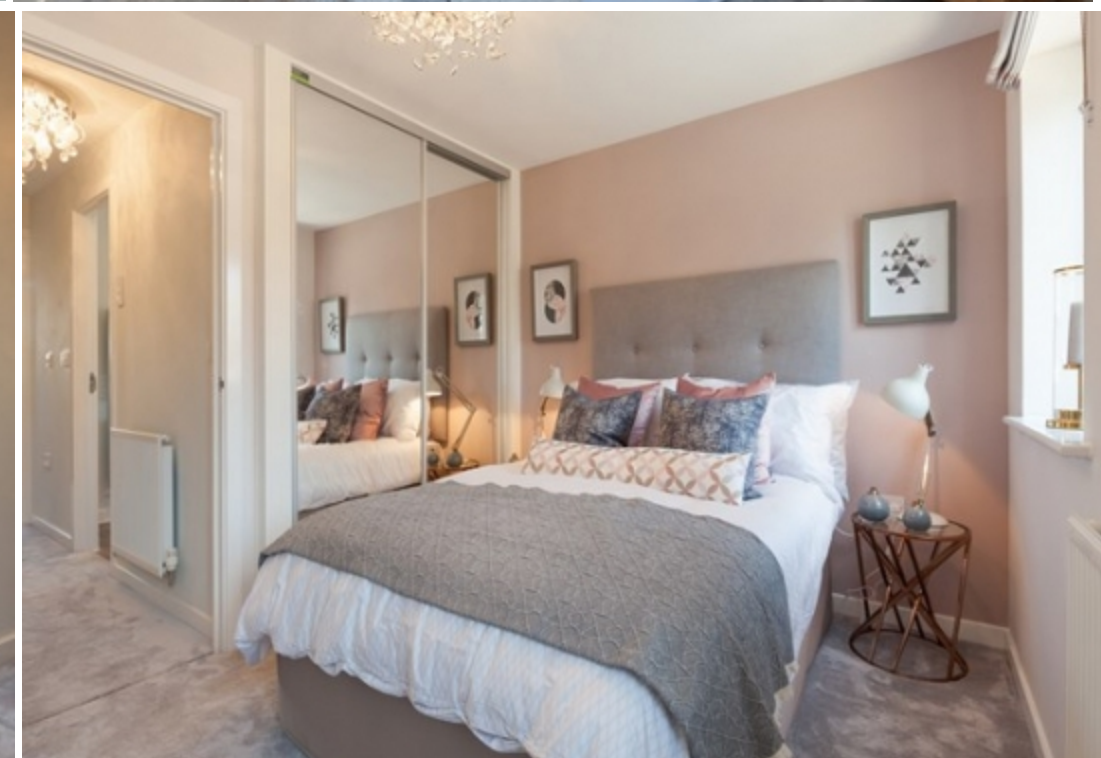
Ashworth Place is a collection of two, three and four-bedroom homes located less than 5 miles to the east of Exeter. Surrounded by beautiful countryside, this is a truly idyllic setting. With its range of new homes, excellent doorstep amenities and fantastic commuter links, Ashworth Place is sure to have something to suit you perfectly.

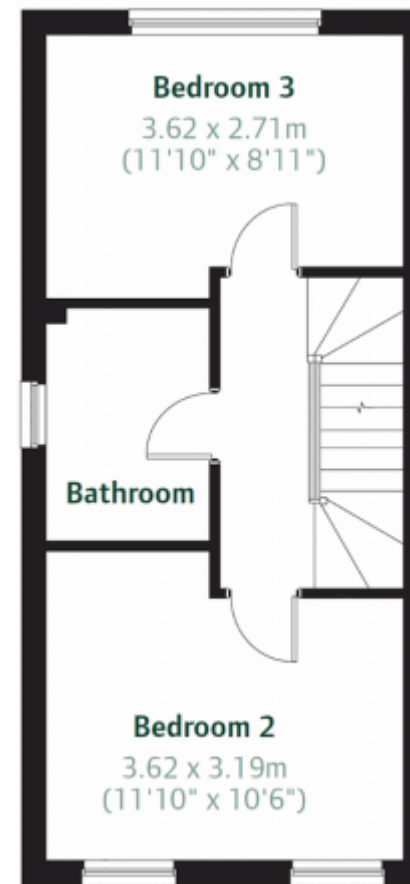
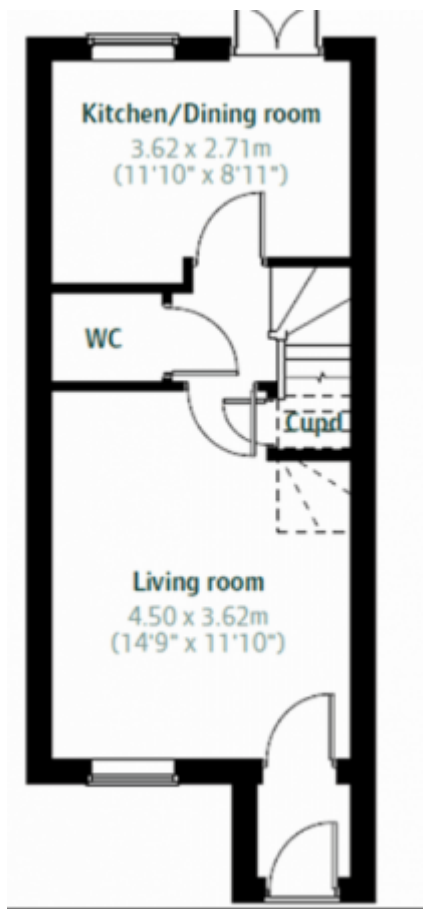
East Devon is a gorgeous area, sometimes overshadowed by the lure of South Devon. However, with the stunning Jurassic Coast, the beautiful Exe Estuary, and plenty of beaches of its own, this is a great place to set up your new home. Historic Exeter has so much to offer, and it's easy to get into the countryside too. The National Trust's Killerton estate just beyond Broadclyst, includes the 800 acre Ashclyst Forest, and Woodbury Common, perfect for walking and cycling trails with views of the sea, are both an easy drive from Ashworth Place.

LOCAL AMENITIES ON YOUR DOORSTEP

This stunning semi-rural location benefits from a brand new town centre, complete with local shops, schools, businesses and a multi-purpose community building. Just 8.5 miles away is the delightful village of Ottery St Mary with its literary history, quirky shops and annual Tar Barrel ceremony. Within a 20 minute drive is the thriving city of Exeter, a hub of entertainment, leisure and shopping in the South West.

Please contact us at [Right at Home Estate Agents](#) for more information and to request a viewing.





This floorplan is for illustrative purposes only and the location of doors, windows and other items are approximate.

Telephone: Landline:- 01392 469333



www.rightathomeexeter.com