



£379,995 Fixed Price

Plot 248, Ashworth Place, Tithebarn, Exeter EX1 3UQ

Detached House | 4 Bedrooms | 3 Bathrooms

Landline:- 01392 469333



www.rightathomeexeter.com



Step Inside

Key Features

- * FLOORING INCLUDED *
- ROSEBERRY - FOUR BEDROOM DETACHED HOUSE
- LIVING ROOM
- KITCHEN/DINING ROOM
- CLOAKROOM
- UTILITY ROOM
- GARAGE AND DRIVEWAY WITH PARKING FOR ONE CAR
- MASTER EN-SUITE
- FAMILY BATHROOM
- REAR GARDEN
- FREEHOLD
- COUNCIL TAX TBC

Main Particulars

* FLOORING INCLUDED* ROSEBERRY - FOUR BEDROOM DETACHED HOUSE * UPGRADES: SHOWER UPGRADE, SPOTLIGHTS, CHOOSE YOUR OWN KITCHEN AND TILES
* LIVING ROOM KITCHEN/DINING ROOM * CLOAKROOM * UTILITY ROOM * GARAGE AND DRIVEWAY WITH PARKING FOR ONE CAR *MASTER EN-SUITE * FAMILY
BATHROOM * REAR GARDEN * FREEHOLD * COUNCIL TAX TBC

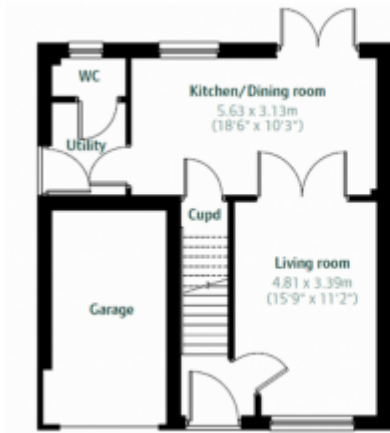
The Roseberry is a detached home with an integral garage and a living room with double doors leading into an open-plan kitchen/diner. There's also a utility room, a downstairs WC and three very useful storage cupboards. Bedroom one has an en suite, with the landing leading on to three further bedrooms and a family bathroom.

Local amenities on your doorstep

This stunning semi-rural location benefits from a brand new town centre, complete with local shops, schools, businesses and a multi-purpose community building. Just 8.5 miles away is the delightful village of Ottery St Mary with its literary history, quirky shops and annual Tar Barrel ceremony. Within a 20 minute drive is the thriving city of Exeter, a hub of entertainment, leisure and shopping in the South West.

Please contact us at Right at Home Estate Agents for more information and to request a viewing.





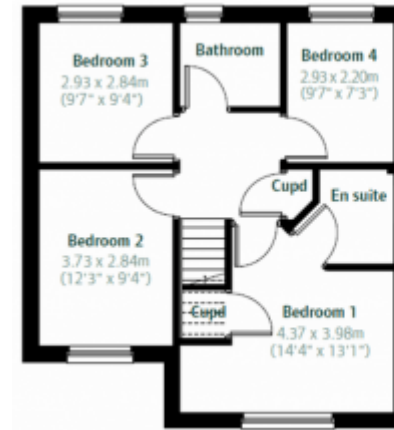
Ground Floor

Kitchen/Dining room

18' 6" x 10' 3" (5.63m x 3.13m)

Living room

15' 9" x 11' 2" (4.81m x 3.39m)



First Floor

Bedroom 1

14' 4" x 13' 1" (4.37m x 3.98m)

Bedroom 2

12' 3" x 9' 4" (3.73m x 2.84m)

Bedroom 3

9' 7" x 9' 4" (2.93m x 2.84m)

Bedroom 4

9' 7" x 7' 3" (2.93m x 2.2m)

This floorplan is for illustrative purposes only and the location of doors, windows and other items are approximate.

Agents notes: All measurements are approximate and for general guidance only and whilst every attempt has been made to ensure accuracy, they must not be relied on. The fixtures, fittings and appliances referred to have not been tested and therefore no guarantee can be given that they are in working order. Internal photographs are reproduced for general information and it must not be inferred that any item shown is included with the property. Copyright © 2024 Registered Office: , 17A Main Road, Pinhoe, Exeter EX4 9EY

Telephone: Landline:- 01392 469333



www.rightathomeexeter.com