



£245,000 Offers Over

King Arthurs Road, Exeter

Terraced House | 3 Bedrooms

Landline:- 01392 469333



www.rightathomeexeter.com



Step Inside

Key Features

- Terraced
- Three Bedrooms
- Living Room
- Kitchen/Diner
- Bathroom
- Fully enclosed front and rear gardens
- Access to rear garden via side & back gate
- Parking

Property Description

* TERRACED * THREE BEDROOMS * KITCHEN/DINER * LIVING ROOM * BATHROOM * FULLY ENCLOSED FRONT AND REAR GARDENS * ACCESS TO REAR GARDEN VIA SIDE AND BACK GATE* PARKING AVAILABLE

Main Particulars

Step into this spacious three bedroom terraced house in Beacon Heath. The property offers ample accommodation, a kitchen/dining room ideal for family meals, a large living room leading to the rear garden, three comfortable double bedrooms, and a family bathroom.

Parking is conveniently available in front of the property.

Exeter itself is a vibrant city with restaurants, shops, pubs, and historic landmarks. And with easy access to transport links, including trains to London, Exeter Airport, and the M5 motorway.

Don't miss this chance to make this property your own. Come and view!

Council Tax Band: B

Tenure: Freehold

Kitchen / Dining Room w: 3.59m x l: 3.78m (w: 11' 9" x l: 12' 5")

Living Room w: 3.52m x l: 5.4m (w: 11' 7" x l: 17' 9")

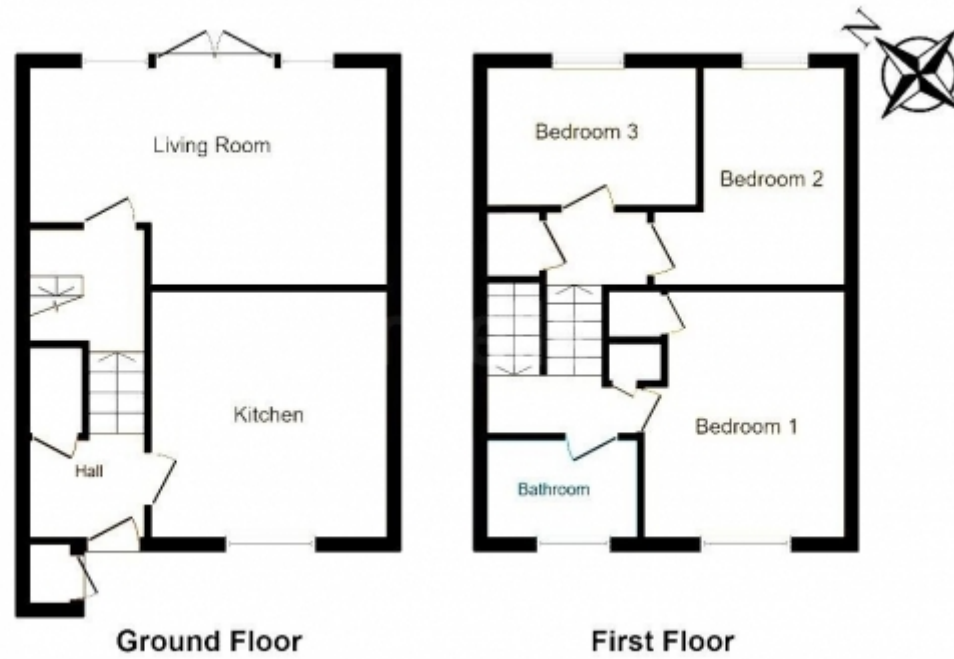
Bathroom w: 1.66m x l: 2.39m (w: 5' 5" x l: 7' 10")

Bedroom 1 w: 2.95m x l: 3.78m (w: 9' 8" x l: 12' 5")

Bedroom 2 w: 2.91m x l: 3.3m (w: 9' 7" x l: 10' 10")

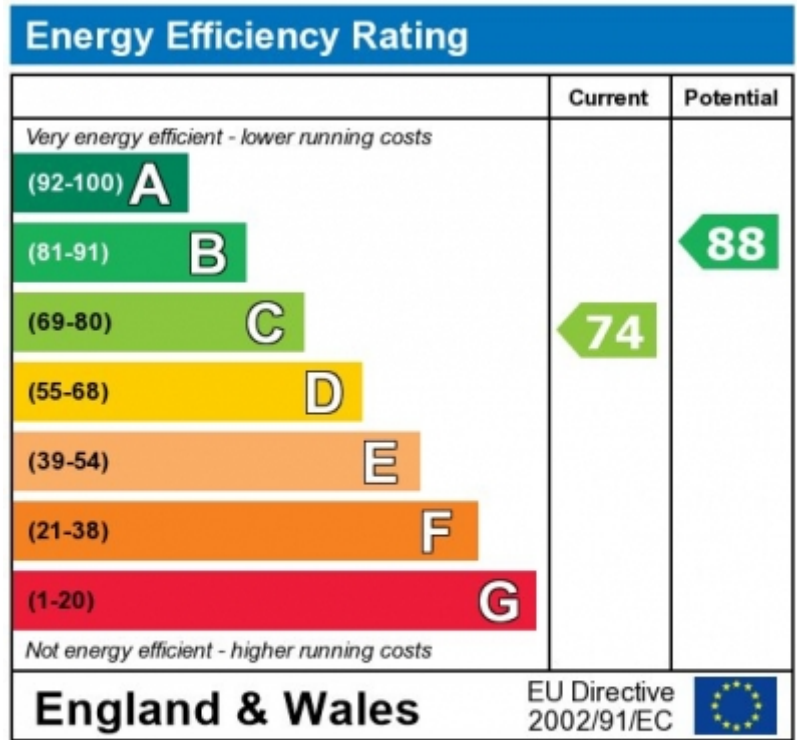
Bedroom 3 w: 2.12m x l: 3.19m (w: 6' 11" x l: 10' 6")





This floorplan is for illustrative purposes only and the location of doors, windows and other items are approximate.

Agents notes: All measurements are approximate and for general guidance only and whilst every attempt has been made to ensure accuracy, they must not be relied on. The fixtures, fittings and appliances referred to have not been tested and therefore no guarantee can be given that they are in working order. Internal photographs are reproduced for general information and it must not be inferred that any item shown is included with the property. Copyright © 2025 Registered Office: , 17A Main Road, Pinhoe, Exeter EX4 9EY



The energy efficiency rating is a measure of the overall efficiency of a home. The higher the rating the more energy

Telephone: Landline:- 01392 469333



www.rightathomeexeter.com